

**STEADFAST**  
ASSESSMENT



**STEADFAST ASSESSMENT**

The Reliable Assessment Service

 [www.steadfastassessment.co.uk](http://www.steadfastassessment.co.uk)

 01775 513056

# WELCOME TO STEADFAST ASSESSMENT

As an independent, Ofqual approved and regulated Apprenticeship Assessment Organisation, Steadfast Assessment is committed to conducting fair and consistent assessments, promoting employer confidence and a positive apprentice experience. We believe that a robust assessment process can go hand in hand with excellent customer service.

Our qualified and experienced assessors have the expertise to deliver the high-quality assessments which meet the requirements of each relevant assessment plan.

We prioritise the needs of the apprentice, as well as working successfully with training providers and employers, making us the ideal choice for your Apprenticeship Assessment requirements.





# WHY CHOOSE US?



## USER-FRIENDLY ONLINE PLATFORM

User-friendly online platform, serving as a one-stop facility for registering apprentices, engaging with the Steadfast Assessment team, accessing resources, uploading information, and monitoring apprentice progress.



## A DEDICATED CO-ORDINATOR

Once your apprentice is registered, you'll have a dedicated co-ordinator to assist you with any queries you may have and liaise with you about planning and preparing for the assessment.



## FREE RESITS AND RETAKES

Steadfast Assessment offer free remote resits and retakes for online assessments. Steadfast Assessment undertake resits/retakes in line with the requirements of the relevant assessment plan.



## REMOTE ASSESSMENTS

All our assessments are undertaken remotely unless face to face is specifically required by the relevant assessment plan.

*\*Resits/Retakes which must be conducted face-to-face will be subject to additional fees*

# EDUCATION & EARLY YEARS



## Early Years Practitioner Level 2

*This assessment includes two methods: observation with questioning and a professional discussion supported by a portfolio of evidence. Graded as Fail, Pass or Distinction.*

£695

## Early Years Educator Level 3

*This assessment consists of two methods: an observation of practice and a professional discussion, graded as Fail, Pass, or Distinction. The observation must be conducted in person.*

£795

## Teaching Assistant Level 3

*This assessment includes two methods: A practical observation with questions and a professional discussion supported by a portfolio of evidence. Graded as Fail, Pass, Merit or Distinction. The observation must be conducted in person.*

£695

## Safeguarding Support Officer Level 3

*This assessment includes two methods: A presentation with questions, and a professional discussion. Graded as Fail, Pass, Merit or Distinction.*

£795

## Learning & Skills Mentor Level 4

*This assessment includes two methods: An observation with questions, and a professional discussion underpinned by a portfolio of evidence. Graded as Fail, Pass, Merit or Distinction.*

£585

## School Business Professional Level 4

*This assessment includes two methods: A simulated task and a project report and a presentation with questions and answers. Graded as Fail, Pass or Distinction.*

---

£995

## Specialist Teaching Assistant Level 5

*This assessment includes two methods: a professional discussion underpinned by a portfolio of evidence and an observation with questions. Graded as Fail, Pass, Merit or Distinction. The observation must be conducted in person.*

---

£1225

## Early Years Lead Practitioner Level 5

*This assessment consists of two methods: a observation of practice and a professional discussion, graded as Fail, Pass, or Distinction. The observation must be conducted in person.*

---

£925

## Learning & Skills Teacher Level 5

*This assessment includes two methods: A lesson observation and professional dialogue, and professional discussion underpinned by a portfolio of evidence Graded as Fail, Pass or Distinction.*

£1225



# PROFESSIONAL SERVICES



---

## Business Administrator Level 3

*This assessment consists of two methods: an observation of practice and a professional discussion, graded as Fail, Pass, or Distinction. The observation must be conducted in person.*

£600

---

## Team Leader Supervisor Level 3

*This assessment includes two methods: A presentation with questions and answers, and a professional discussion. Graded as Fail, Pass or Distinction.*

£585

---

## Safety, Health & Environment Technician Level 3

*This assessment includes three methods: A knowledge test, a project report, and a professional discussion underpinned by a portfolio of evidence. Graded as Fail, Pass or Distinction.*

£695

---

## Junior Management Consultant Level 4

*This assessment includes two methods: A reflective portfolio, and a presentation and interview. Graded as Fail, Pass or Distinction.*

£895

---

## Associate Project Manager Level 4

*This assessment includes two methods: A written project report with presentation and questioning, and a professional discussion underpinned by a portfolio of evidence. Graded as Fail, Pass or Distinction.*

£995

---



## Corporate Responsibility & Sustainability Practitioner *Level 4*

*This assessment includes two methods: a professional discussion underpinned by a portfolio of evidence and a work-based project followed by a report and a presentation. Graded as Fail, Pass or Distinction.*

---

**£1495**

## Coaching Professional *Level 5*

*This assessment consists of two methods: an observation of practice and a professional discussion, graded as Fail, Pass, or Distinction. The observation must be conducted in person.*

---

**£895**

## Operations Manager *Level 5*

*This assessment includes two methods: A professional discussion (PD) underpinned by a portfolio of evidence, and a project with a report. Graded as Fail, Pass or Distinction.*

**£825**



# FACILITIES & PROPERTY MANAGEMENT



## Facilities Services Operative Level 2

*This assessment consists of three methods: a knowledge test, an observation, and a professional discussion underpinned by a portfolio. It is graded as Pass, Merit, or Fail.*

£550

## Facilities Management Supervisor Level 3

*This assessment consists of two methods: A project report with presentation and questions, and a professional discussion underpinned by a portfolio of evidence. Graded as Fail, Pass, or Distinction.*

£595

## Facilities Manager Level 4

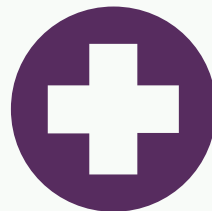
*This assessment consists of two methods: a business case with questions and answers, and a professional discussion underpinned by a portfolio of evidence. It is graded as Fail, Pass, or Distinction.*

£895





# HEALTH & CARE SERVICES



## Adult Care Worker Level 2

*This assessment includes two methods: A situational judgement test, and a professional discussion. Graded as Fail, Pass, Merit or Distinction.*

£425

## Healthcare Support Worker Level 2

*This assessment includes two methods: An observation of practice with questions, and a professional discussion underpinned by a portfolio of evidence. Graded as Fail, Pass or Distinction.*

£495

## Healthcare Science Assistant Level 2

*This assessment includes two assessment methods: An observation of practice with questions, and a professional discussion underpinned by a portfolio of evidence. Graded as Fail, Pass or Distinction.*

£995

V1.0

£1195

V1.1

## Lead Adult Care Worker Level 3

*This assessment includes two methods: A situational judgement test, and a professional discussion. Graded as Fail, Pass, Merit or Distinction.*

£425

## Senior Healthcare Support Worker Level 3

*This assessment includes two methods: An observation of practice with questions, and a professional discussion underpinned by a portfolio of evidence. Graded as Fail, Pass or Distinction.*

£595

## Healthcare Science Associate Level 4

*This assessment includes two methods: An observation of practice with questions, and a professional discussion underpinned by a portfolio of evidence. Graded as Fail, Pass or Distinction.*

£1395 V1.0

£1800 V1.1

## Lead Practitioner in Adult Care Level 4

*This assessment includes two methods: An observation of practice and a professional discussion. Graded as Fail, Pass or Distinction.*

£800

## Leader in Adult Care Level 5

*This assessment includes two methods: An observation of leadership and a professional discussion. Graded as Fail, Pass or Distinction.*

£800

## Associate Continuing Healthcare Practitioner Level 5

*This assessment includes two methods: A Work-based observation with questioning, and a professional discussion underpinned by a portfolio of work. Graded as Fail, Pass or Distinction. The observation must be conducted in person.*

£1800

## Early Intervention Practitioner Level 4

*This assessment includes two methods: Presentation with questions and answers and a professional discussion. Graded as Fail, Pass, Merit or Distinction.*

£595

## Children, Young People and Families Practitioner *Level 4*

*This assessment includes two methods: An observation of practice with questions, and a competence interview with independent assessor Graded and Fail, Pass or Distinction.*

---

£675

## Children, Young People and Families Manager *Level 5*

*This assessment includes two methods: A competence Interview informed by portfolio and a situational judgement test Graded and Fail, Pass or Distinction.*

£1395



# SALES, MARKETING & PROCUREMENT



## Customer Service Practitioner *Level 2*

*This assessment includes three methods: An apprentice showcase, a practical observation and a professional discussion. Graded as Fail, Pass or Distinction.*

£495

## Customer Service Specialist *Level 3*

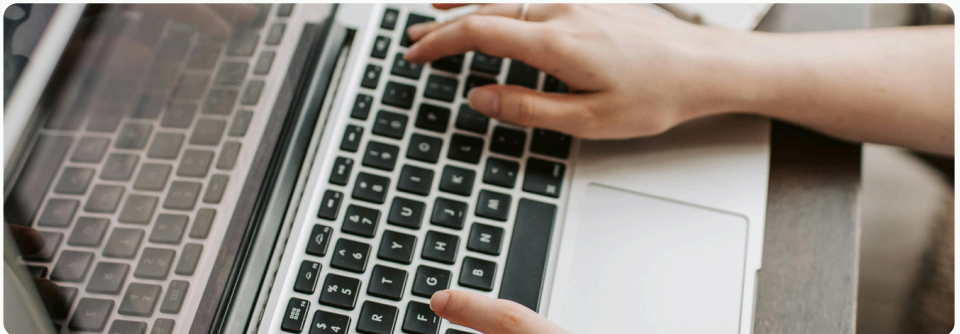
*This assessment includes three methods: A practical observation with questioning, a work-based project supported by an interview, and a professional discussion supported by portfolio of evidence. Graded as Fail, Pass or Distinction.*

£550

## Bid & Proposal Coordinator *Level 3*

*This assessment consists of two methods: an observation of practice and a professional discussion, graded as Fail, Pass, or Distinction. The observation must be conducted in person.*

£895



# FUNERAL CARE



## Funeral Team Member Level 2

*This assessment includes three methods: An on-demand test, a competence scenario and a professional discussion. Graded as Fail, Pass or Distinction.*

£725

## Funeral Director Level 3

*This assessment includes three methods: An on-demand test, a simulated scenario and a professional discussion. Graded as Fail, Pass or Distinction.*

£825



# TRAVEL & TOURISM



## Travel Consultant Level 3

*This assessment includes two methods:*

*A knowledge test, and a professional discussion. Graded as Fail, Pass, Merit or Distinction.*

**£645**





**STEADFAST**  
ASSESSMENT



# FIND OUT MORE



[www.steadfastassessment.co.uk](http://www.steadfastassessment.co.uk)

01775 513056

[enquiries@steadfastassessment.co.uk](mailto:enquiries@steadfastassessment.co.uk)

Steadfast Assessment is a division of Steadfast Training Limited. All rights reserved.  
Registered in England and Wales with Company Number 5526192.

*Information correct at time of print, 13<sup>th</sup> January 2026*